



Trak-Star[®]

**Tools & Equipment for Maintenance of Way,
Communication & Signals and Bridges & Buildings**





LET OUR SYSTEMS WORK FOR YOUR SYSTEM:

Selection:

Trak-Star® Rail Drills offer the power choices your applications call for... gas, hydraulic, or electric.

Convenience:

Twister Bits™ are disposable. Ergonomically placed controls on all units allow for easy access and use. An optional storage box for use on maintenance of way vehicles protects everything needed for making holes... Trak-Star® Rail Drill, rail shoes, cutters, pilots, coolant bottle and a hole location template.

Portability:

Trak-Star® Rail Drills are lightweight, ranging in weight from 26.5 to 49 lbs; about half the weight of other drills, and providing one-person operation and transport.

Quality:

Rugged construction, ten point contact that securely locks drill unit to the rail and precision spindle bearings all contribute to the stability required to use Trak-Star's precision ground annular cutters which give you accurate holes and long tool life.

Productivity:

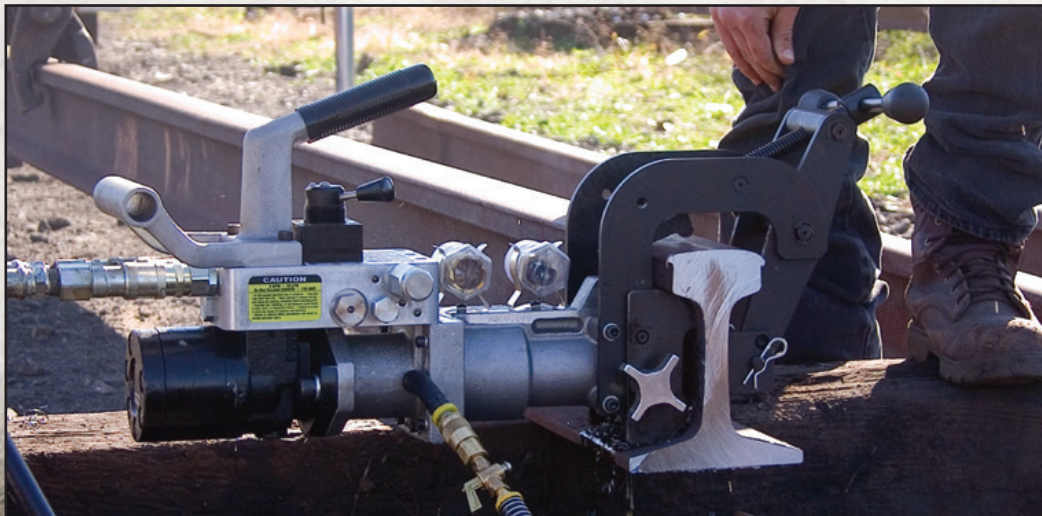
A unique, scissor style clamp design, and faster drilling speeds means change outs can be completed in about half the time of other rail drills. Cool cuts eliminate heat build up and rail failures.

Economy:

With Twister Bits™ your cost per hole can be as low as \$1, giving you more holes per Rail Cutter than spade or twist drills. The increase in productivity and less frequent tool replacements keep maintenance costs low.

INDEX

Rail Drills	3
Twister Bits™	4
Bonding Bits	5
Carbide Tool Holders.....	5
Misc Cutting Tools	5
Shoes	6
Rail Saws	7
Gas Impact Wrench / Auger Bits	8
Gas Impact Sockets	8
Coolant / Template / Storage Box	9
Trak-Blade™ / Accessories	9
Ordering Guidelines	10
Warranty	11



TRAK-STAR® RAIL DRILLS

GAS DRILL

Model RB2SPD Features:

- Honda 2.1 HP, 4-Stroke Engine with Oil Alert (No Mixing Gas)
- Weighs only 49 lbs (22.2 kg)
- Uses Twister Bits™
- Accurate quill-feed arbor system
- Positive slug ejection
- Two Speed: 150/350 RPM
- Thru-the-tool coolant
- One pull ergonomic feed handle
- High torque gear box
- 10 Point clamping system
- Center balanced handle
- Drill holes in less than 20 sec
- Optional clamp for crane/girder rail
- Two year warranty

NEW!



RB2SPD Models	
Part No.	Description
0038602	RB2SPD Gas Powered Rail Drill
0038605	RB2SPD Gas Powered Rail Drill Kit*
05570	Bonding Retrofit Kit for the RB2SPD
27557	Clamp for Crane Rail**
27559	Clamp for Girder Rail

* Kits include: (3) Twister Bits, (2) Pilots, (2) Pair Shoes, (1) Template & 5 gal. Coolant

**Must use 2" (50mm) depth of cut Twister Bits

POWER FEED HYDRAULIC DRILL

Model RM42 Features:

- Hydraulic Power Feed Motor with Forward & Reverse
- Weighs only 48 lbs (21.7 kg)
- Uses Twister Bits™
- Accurate quill-feed arbor system
- Positive slug ejection
- 150 RPM
- Thru-the-tool coolant
- 10 Point clamping system
- Quick change rail shoes
- Center balanced handle
- 2 place holders for extra Twister Bits™
- Drill holes in less than 28 sec.
- Optional clamp for crane/girder rail
- Two year warranty



RM42 Models	
Part No.	Description
0042602	RM42 Hydraulic Powered Rail Drill
0042605	RM42 Hydraulic Powered Rail Drill Kit*
27541	Pig Tail Extensions
27556	Clamp for Crane Rail**
27559	Clamp for Girder Rail

* Kits include: (3) Twister Bits, (2) Pilots, (2) Pair Shoes, (1) Template & 5 gal. Coolant

**Must use 2" (50mm) depth of cut Twister Bits

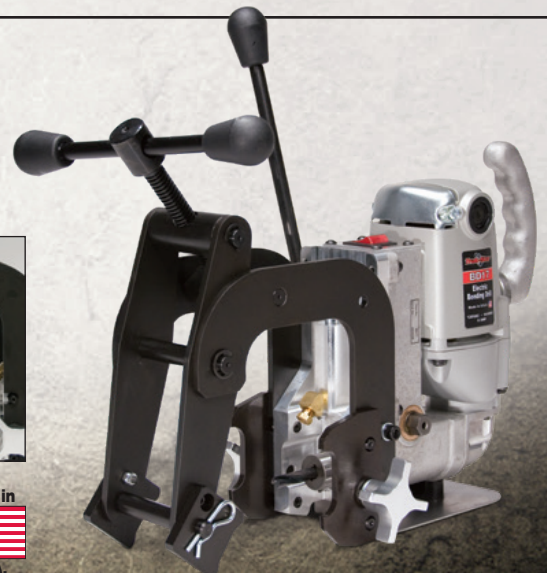
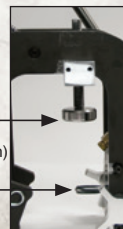
ELECTRIC BONDING/TRANSDUCER DRILL

Model BD17 Features:

- Weighs only 26.5 lbs (12 kg)*
- Uses bonding bits (See Page 5)
- Accurate quill-feed arbor system
- 450 RPM
- Coolant system
- One pull ergonomic feed handle
- High torque gear box
- 10 Point clamping system
- Carrying handle
- Two year warranty

Transducer Drill has the added feature of setting the hole height off the top of the rail.

Height Adjustment: 1" (25mm)



BD17 Models	
Part No.	Description
0017102	BD17 Electric Bonding Drill (120V)
0017109	BD17 Electric Transducer Drill (120V)
0017202	BD17 Electric Bonding Drill (230V)
0017302	BD17 Electric Bonding Drill (230V) Type I Plug

* Transducer Drill weighs 28.5 lbs (12.9 kg)

TWISTER BITS™



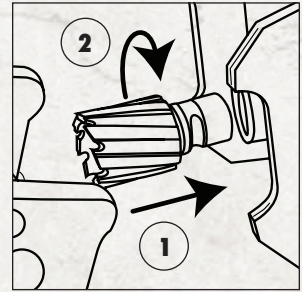
TWISTER BITS™

Diameter	BLACK Part No.	CARBIDE Part No.
Use with Pilot 03635 • 7/8" (22mm) DOC		
3/4"	15324	18-15224
7/8"	15328	18-15228
15/16"	15330	18-15230
1"	15332	18-15232
1-1/16"	15334	18-15234
1-1/8"	15336	18-15236
1-3/16"	15338	18-15238
1-1/4"	15340	18-15240
1-5/16"	15342	18-15242
1-3/8"	15344	18-15244
1-7/16"	15346	18-15246
1-1/2"	15348	18-15248
1-5/8"	15352	18-15252
1-11/16"	15354	18-15254
METRIC TWISTER BITS™		
Use with Pilot 08632 • 7/8" (22mm) DOC		
13mm	15913*	-----
Use with Pilot 03635 • 7/8" (22mm) DOC		
19mm	-----	18-15819
22mm	15922*	18-15822
25mm	15925	18-15825
28mm	15928	18-15828
30mm	15930	18-15830
32mm	15932	18-15832
36mm	15936*	18-15836*

* Non-stock cutters - 25 pc minimum

WARNING: This product contains Cobalt, a chemical known to the State of California to cause cancer. For more information, go to www.P65Warnings.ca.gov

Trak-Star Twister Bits™ are the standard tooling for drilling all types of rail. They are available in two different styles: Black coated M42 HSS and Carbide Tipped. Twister Black Bits are resharpenable, made in the USA and feature a Titanium Aluminum Nitride coating for extended tool life when cutting rail (up to 400 BHN). Carbide Twister Bits feature brazed in carbide tips and offer up to 2-1/2 times the tool life in both standard and extremely hard rail when used with the RB2SPD.



The unique annular (hollow) design and thicker cutter wall offers extended tool life and extra durability. Twister Bits feature the quarter turn style mounting for quick and easy installation with no tools required. When used with a Trak-Star Rail Drill, installation is simple; insert the bit into the arbor, and give it a turn.

Twister Bits can also be used with similar rail drilling systems with a 3/4" arbor bore. The shank of the bit features a flat that easily adapts to the set-screw style mounting, offering a secure installation, and allowing Trak-Star cutting technology to be used in multiple systems.

**For questions concerning
which cutters to use or for
custom cutter solutions call
866-245-3745**

MISC. CUTTING TOOLS

TWISTER BITS™ FOR CRANE/GIRDER RAIL



These special Twister Bits™ have a 2" (50mm) depth of cut and are specifically design for Crane & Girder Rail applications. Black coated for extended tool life and Twister Bit™ shank. Made in USA.

WARNING: This product contains Cobalt, a chemical known to the State of California to cause cancer. For more information, go to www.P65Warnings.ca.gov

Part No.	Decimal Equivalent	Part No.
Use with Pilot 07496		
3/4"	.7500	15624
7/8"	.8750	15628
15/16"	.9375	15630
1"	1.0000	15632
1-1/16"	1.0625	15634
1-1/8"	1.1250	15636
1-3/16"	1.1875	15638
1-1/4"	1.2500	15640
1-5/16"	1.3125	15642
1-3/8"	1.3750	15644
1-7/16"	1.4375	15646
1-1/2"	1.5000	15648

BONDING BITS

Trak-Star Bonding Bits are for use in the BD17 Bonding Drill. Adapters are fitted with the Twister™ style shanks for quick installation and removal.



Made in

U.S.A.

Part No.	Description
03452	3/8" Bonding Bit
05565	3/8" Bonding Bit w/ Adapter
07302	8mm Bonding Bit w/ Adapter
07304	8mm Bonding Bit
07305	9/32" Bonding Bit w/ Adapter
07307	9/32" Bonding Bit
07316	13/32" Bonding Bit w/ Adapter
07318	13/32" Bonding Bit
05570	Bonding Retrofit Kit for RB2SPD
07556	Transducer Attachment for BD17

CARBIDE TOOL HOLDERS

Trak-Star® Carbide Tool Holders use two indexable carbide inserts that offer long tool life and a low cost per hole. **Not for use in Trak-Star® rail drills.**



Made in

U.S.A.

Part No.	Description
07090	1-1/8" Carbide Tool*
07091	1-3/16" Carbide Tool*
07092	1-1/4" Carbide Tool*
07093	1-5/16" Carbide Tool*
07098	#10 Torx Driver
07099	Carbide Inserts - 10 Pack w/ Torx Screws

* Tool Holders do not include carbide inserts.

WARNING: This product contains Cobalt, a chemical known to the State of California to cause cancer. For more information, go to www.P65Warnings.ca.gov

CONVERSION PILOT



The NorFast Conversion Pilot is used with 1-11/16" cutters. It also can be used for enlarging an existing hole. Made in USA.

Part No.	Description
05784	Conversion Pilot

TRAK-STAR® RAIL SHOES

Trak-Star® Rail Shoes work hand-in-hand with the clamping system, using a total of 10 points of contact to keep your Rail Drill properly aligned with the rail's web. Use the chart below to identify the shoes required for your applications, or contact our Technical Support Team to request a custom designed set of shoes for your specialty needs.

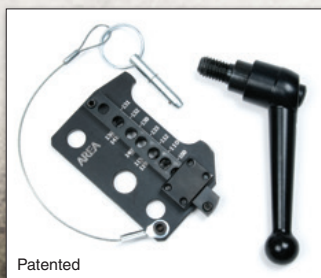
866-245-3745



Railway Association or System	Tee Rail Section, lb.	Section Designation				Shoe Part No. (Pair)	Wedge Shoe** Part No (Pair)
ASCE American Society of Civil Engineers	70	7040	70	AS	701	01906	---
	75	7540	75	AS	753	01907	---
	80	8040	80	AS	800	01908	---
	85	8540	85	AS	851	01909	08655
	90	9040	90	AS	---	01910	---
	100	10040	100	AS	---	01911	---
ARA American Railroad Association	Type "A" High Rail for High Speeds						
	90	9020	90	RA	902	01927	08656
	100	10020	100	RA	1003	01928	---
	Type "B" Lower Rail for Heavy Loads @ Slower Speeds						
	90	9030	90	RB	905	01908	---
	100	10030	100	RB	1002	01910	---
AREA American Railway Engineering Association	100	10025	100	RE	10025	01894	08657
	110	11025	110	RE	1100	01895	---
	112	11228	112	RE	1121	01896	08658
	115	11525	115	RE	1150	01897	08658
	119	11937	119	RE	1190	01897	08658
	130	13025	130	RE	1300	01898	---
	131	13128	131	RE	1311	01899	---
	132	13228	132	RE	1321	01902	08659
	136	13622	136	RE	13637	01902	08659
	141		141	AB		01902	08660
	133	13331	133	RE	1330	01901	---
	140		140	RE		01903	08659
CSX	122		122	CB		01918	---
Former C & NW now UP	100	10035	100	DM	10035	01926	---
	85	8531	85	PS		01912	---
PS Pennsylvania System	100	10031	100	PS		01913	---
	130	13031	130	PS		01914	---
	155	15531	155	PS		01919	---
NYC (Dudley)	105	10524	105	DY		01915	---
New York Central & Hudson River Railroad	127	12723	127	DY		01916	---
PRR Pennsylvania Railroad	85	8533	85	PR		01917	---

** Wedge shoes offer improved holding strength for the RM42 hydraulic drill. Shoes do not work with roll over.

Crane & Girder Rail Shoes	Tee Rail Section, lb.	Hole Height	Drill Type	Part No. (Pair)
Crane Rail <i>(Must use 2" DOC Twister Bits™)</i>	104	2-7/16"	Gas	07468
	104	2-7/16"	Hyd	07469
	105	2-13/64"	Gas	07470
	105	2-13/64"	Hyd	07471
	135	2-15/32"	Gas	07472
	135	2-15/32"	Hyd	07473
	171	2-5/8"	Gas	07474
	171	2-5/8"	Hyd	07475
Girder <i>(Use standard Twister Bits™ w/ 07495 Arbor Extender or 2" DOC Twister Bits™)</i>	Ri59N, Ri60N, NP4AM	2-7/8"	Gas/Hyd	07482
	GGR118	2-3/8"	Gas/Hyd	07486
	128/149	2-3/4"	Gas/Hyd	07490
	128/149	3"	Gas/Hyd	07492



Patented

Adjustable AREA Rail Shoe

- Use one pair of shoes for 10 different sizes of AREA rail
- Fits sizes: 100, 110, 112, 115/119, 130, 131, 132, 133, 136/141, 140
- **Part No: 08620** (pair)

TRAK-STAR® RAIL SAWS

HYDRAULIC SAW

Model HS16 Features:

- Longer frame for better operator comfort
- Arbor support bearing
- Ergonomic handles with vibration reducing grips
- Reversible motor
- Hose guards for operator safety
- Operator height adjustable clamp
- Minimal maintenance
- Two year warranty

HS16 SPECIFICATIONS

Motor.....	Hydraulic
RPM (no load).....	3400
Wheel	16" (406mm)
Arbor	1" (25mm)
Flow (max)	10 GPM / 38 LPM
Pressure (max)	2000 PSI / 138 Bar
Dimensions*.....	43-1/2" L x 17" H x 9" W (1105mm L x 432mm H x 229mm W)
Weight	41 lbs (18.6 kg) Saw 20 lbs (9 kg) Clamp

* without clamp



HS16 Model

Part No.	Description
0016601	HS16 Hydraulic Rail Saw 16"
27541	Pig Tail Extensions
04420	Trak-Blade™ 16" Hi-Performance Zirconia
04415	Trak-Blade™ 16" Cut-Off Wheel
04419	Trak-Blade™ 14" Cut-Off Wheel

HUSQVARNA GAS SAW

Model K1270 II Features:

- Easier starting
- Less maintenance
- Reduced vibration levels
- Redesigned fuel tank
- Perfect right angle cuts
- Cuts from both sides of the rail
- Fast stable mounting to the track
- 16" wheel capacity
- Weighs Only 46.7 lbs (21.2 kg)
- Husqvarna Smart Carb®
- Active Air Filtration™
- Top mounted decompression valve

K1270 II SPECIFICATIONS

Motor.....	7.8 HP - 2 cycle gas
RPM (max).....	4300 RPM
Wheel	16" (406mm)
Arbor	1" (25mm)
Dimensions	18.5" H x 9.57" W x 29.72" L (470mm H x 243mm W x 755mm L)
Weight	46.7 lbs (21.2 kg)



K1270 II Models

Part No.	Description
0127601	K1270 Gas Powered Rail Saw
0127611	K1270 Rail Saw w/ Large Clamp
04420	Trak-Blade™ 16" Hi-Performance Zirconia
04415	Trak-Blade™ 16" Cut-Off Wheel
04419	Trak-Blade™ 14" Cut-Off Wheel

GAS IMPACT WRENCH



Model GW12 Features:

- Weighs 39.6 lbs (18 kg)
- Torque up to 1250 ft lbs
- Powerful two cycle motor
- 1" square drive
- Durable roll bar system
- Vibration reducing grips
- Use horizontally or vertically
- Can use sockets or auger bits

GW12 SPECIFICATIONS

Motor	Two-stroke 46.5cc
Square Drive	1" / 25.4mm
Bolt Dia	1-5/8" (41mm)
Torque	406 - 1250 ft lbs / 500 - 1700Nm
Dimensions	25-1/2" L x 10-3/4" H x 15" W (648mm L x 273mm H x 381mm W)
Weight	39.6 lbs (18 kg)

Part No.	Description
0012601	Gas Impact Wrench

OZAT SOCKETS



OZAT Impact Sockets are 8-point, 1" square drive with tapered ends for easier access. Superior to other sockets because of their less-stress™ socket configuration. Made with state of the art electro-chemical machining process.

Part No.	Description
07100	1-1/4" OZAT Socket
07101	1-5/16" OZAT Socket
07102	1-3/8" OZAT Socket
07103	1-7/16" OZAT Socket
07104	1-1/2" OZAT Socket
07105	1-9/16" OZAT Socket
07106	1-5/8" OZAT Socket
07107	1-11/16" OZAT Socket
07108	1-3/4" OZAT Socket
07109	1-13/16" OZAT Socket
07110	1-7/8" OZAT Socket
07111	2" OZAT Socket
07112	2-1/8" OZAT Socket
07113	2-3/16" OZAT Socket
07114	2-1/4" OZAT Socket
07115	2-3/8" OZAT Socket
07116	2-1/2" OZAT Socket
07117	Retaining O-Ring
07118	Retaining Pin
07850	Universal Joint
07851	13" Extension
07852	10" Extension

Part No.	Description
07854	70mm Torx Bit Socket
07855	7/8" x 1-1/8" Rectangle Socket
08289	Replacement Torx Bit
08355	1-3/4" Retaining Ring
08356	2" Retaining Ring
08357	2-1/8" Retaining Ring
08372	Variety Pack Ret. Ring (4) ea of 08355, 08356 & 08357



AUGER BITS



Quickly drill holes in wood ties and timber with the Trak-Star® Auger Bits. The drill bits feature a quick release shank and are designed for use with the Trak-Star Gas Impact wrench.

Part No.	Description
07880	Quick Release Adapter for Auger Bits
08026	9/16" x 18" L Auger Bit
08027	5/8" x 18" L Auger Bit
08028	11/16" x 18" L Auger Bit
08029	3/4" x 18" L Auger Bit
08032	15/16" x 18" L Auger Bit

RAIL ACCESSORIES

HOLE LOCATION TEMPLATE



Get the right hole spacing for your application. Templates come in standard sizes or get custom spacing to match your needs.

Part No.	Description
40701	Hole Location Template 3-1/2" x 6" x 6"
40702	Hole Location Template 2-11/16" x 5-1/2" x 5-1/2"
40703	Hole Location Template 2-1/2" x 5" x 5"
40704	Hole Location Template 2-1/2" x 6-1/2" x 6-1/2"
40706	Hole Location Template 2-23/32" x 5-1/2" x 5-1/2"
40570	Hole Location Template (specify when ordering)
40707	Combo 100RE & 132RE
40708	5" x 24" on centers

RAIL DRILL & SAW STORAGE BOX



The perfect weather-proof storage box for your rail drill. Includes handles, vents, and is lockable.

Part No.	Description
03540	Storage Box 11-1/2"D x 32"W x 20-3/4"H

PRESSURIZED COOLANT BOTTLE

A proper working coolant system ensures longer tool life and helps reduce drilling temperature. The Pressurized Coolant Bottle fits all Trak-Star® Rail Drills.



Part No.	Description
01592	Pressurized Coolant Bottle with Hose Assembly
01569	On/Off Valve
05686	Hose Assembly Only
05684	3 Pc. Quick Connect /Nipple Kit
08006	Pump Handle Assy

WARNING: This product can expose you to the chemicals, including lead and/or Di(2-ethylhexyl)phthalate (DEHP), which are chemicals known to the State of California to cause cancer and birth defects or reproductive harm. For more information, go to www.P65Warnings.ca.gov

ROTAMAGIC™ COOLANT & STICK LUBE



Trak-Star® RotaMagic™ Concentrated Coolant is environmentally safe and biodegradable, all the while providing superior lubrication for extended tool life & cooler cuts. **Mix 10:1 with water.** Slick-Stik™ is softer than other stick lubricants for easy application, superior adhesion to the tool, assuring thorough coverage. Made in USA.

Part No.	Description
11741-12	(12) 1 Pint (.47L) Bottles - makes 1 pint each, 12 pints total
11742-4	(4) 1 Gallon (3.8L) Bottles - makes 11 gallons (41.6L) each, 44 gallons (167.6L) total
11743	(1) 5 Gallon Pail (18.9L) - makes 55 gallons (208L) total
11746-12	(12) 1.68 oz. (48g) Slick-Stik™ Lubricant

TRAK-BLADE™

The Trak-Blade™ is a quality, American made cut-off wheel designed specifically for the demanding process of cutting rail. Specially formulated to wear evenly and breakdown consistently making the Trak-Blade less vulnerable to glazing. Sold in a box of (20) wheels. Volume discounts available. 1" Arbor.



Part No.	Description
04420	Trak-Blade (16" dia) High Performance Zirconia (4800 Max RPM)
04415	Trak-Blade (16" dia) (4800 Max RPM)
04419	Trak-Blade (14" dia) (5400 Max RPM)

LEATHER LEGGIN'S

Help protect yourself and clothing while cutting with a rail saw. Leather Leggin's from Trak-Star® are made from top quality leather and spring steel. The leggin's quickly and easily fit over your shins to reduce burn holes and debris on your pants and boots. Made in USA.



Part No.	Description
15001	Leather Leggins

ORDERING GUIDELINES

ORDERING SUGGESTION FOR YOUR FIRST TRAK-STAR® SYSTEM

Quantity	Description	Part No.
Any	Trak-Star Gasoline Rail Drill Trak-Star Power Feed Hydraulic Rail Drill	RB2SPD RM42
1 Set per size per drill	Rail Shoes (available for rail types from 70 to 155 pounds) <i>see chart on page 6</i>	Varies
6 per size per drill	Twister Disposable Rail Drill Bits (no need to resharpen) <i>see chart on page 4</i>	Varies
1 Carton (4 gallons)	RotaMagic™ Concentrated Cutting Fluid (yields 44 gallons when mixed with water)	11742-4
2 per drill	Pilot for Twister Bits™	03635
<i>The above items are necessary to make the system work. The following item will make the system work faster and easier.</i>		
1 for each (hole spacing required)	Hole location Template (customer to provide hole spacing from end of rail)	40570

COMMERCIAL/INDUSTRIAL LIMITED WARRANTY

Hougen Manufacturing, Inc. warrants its Portable Magnetic Drills, Trak-Star Rail Drills, Hydraulic Rail Saw, Tornado II Paint Shaker for two (2) years and Hougen-Ogura Electro-Hydraulic Hole Punchers for one (1) year, and Husqvarna® Rail Saw & Gas Impact Wrench for ninety (90) days from date of purchase against defects due to faulty material or workmanship and will repair or replace (at its option) without charge for any items returned. This warranty is void if the item has been damaged by accident or unreasonable use, neglect, improper service, or other causes not arising out of defects in material or workmanship. No other expressed warranty is given or authorized. Hougen Manufacturing, Inc. disclaims any implied warranty of Merchantability or fitness for any period beyond the expressed warranty and shall not be liable for incidental or consequential damages. Some states do not allow exclusion of incidental or consequential damages or limitation on how long an implied warranty lasts and, if the law of such a state governs your purchase, the above exclusion and limitation may not apply to you. This warranty gives you specific legal rights and you may also have other rights which vary from state to state. To obtain warranty service, return the item(s), transportation prepaid, to your nearest Factory Authorized Warranty Repair Center or to Hougen Manufacturing, Inc., 3001 Hougen Drive, Swartz Creek, MI 48473. This warranty is in Lieu of any other warranty, expressed or implied, including any warranty of merchantability or fitness for a particular purpose.

Hougen Patent Notice

The products covered in this catalog may be covered by one or more of the following U.S. patents, foreign patents, and pending patents.

4452554
5203650

4892447
Re33440

5145296
5902076

9833842 B2
D863102

Photographs and Specifications are accurate in detail at time of printing. Manufacturer reserves the right to make improvements and modifications to designs without prior notice.

Hougen, Hougen-Edge, Trak-Star and Punch Pro logos are propriety trademarks of Hougen Manufacturing, Inc. RotaLoc, RotaLoc Plus, Trak-Blade, Twister, Twister Bits, RailMaster, RailBoss, Slick-Stik and RotaMagic are trademarks of Hougen Manufacturing, Inc.

Husqvarna is a proprietary trademark of Husqvarna Group.

FACTORY AUTHORIZED WARRANTY REPAIR CENTERS

Hougen Manufacturing, Inc.
3001 Hougen Drive
Swartz Creek, MI 48473 USA
(866) 245-3745

Kenbil Service Co.
2900 Adams Street C-18
Riverside, CA 92504
(951) 689-6633

Hougen Canada
309 Nash Rd N
Hamilton, Ontario L8H 7P4
(866) 245-3745

**For your local field support, training
& repair contacts visit:**

**www.trak-star.com
or call (866) 245-3745**

Memberships & Associations



Hougen Manufacturing has received, and proudly maintains, the Association of American Railroads Quality Assurance Program Certification.



AREMA



HOUGEN MANUFACTURING, INC.

3001 Hougen Drive • Swartz Creek, MI 48473 USA
Ph: (866) 245-3745 • Fax: (800) 309-3299
info@trak-star.com • www.trak-star.com

Distributed By: